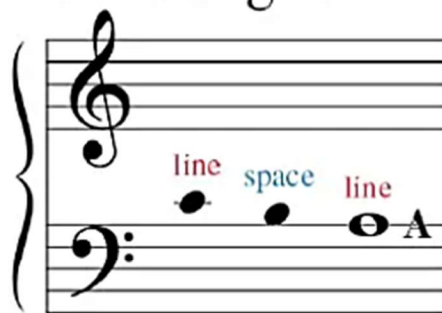
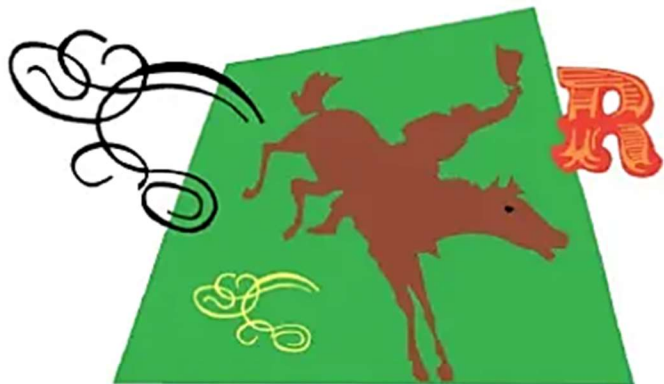


Learning A



A is a line note.
It is the *top line* of the bass staff.

- Circle all the A's below. 



Rodeo

Cheerfully

mf Ro - de - o, ro - de - o, It's a buck - ing bron - co show.

3 on ___?

5 1 on ___?

3

Grab your cow - boy hat, we're off to see the ro - de - o!

3

DISCOVERY



Point out all the repeated notes. Then name each note in this piece aloud.

Teacher Duet: (Student plays 1 octave higher)

R.H. *mf* 5 2

L.H. *mf* 2

5